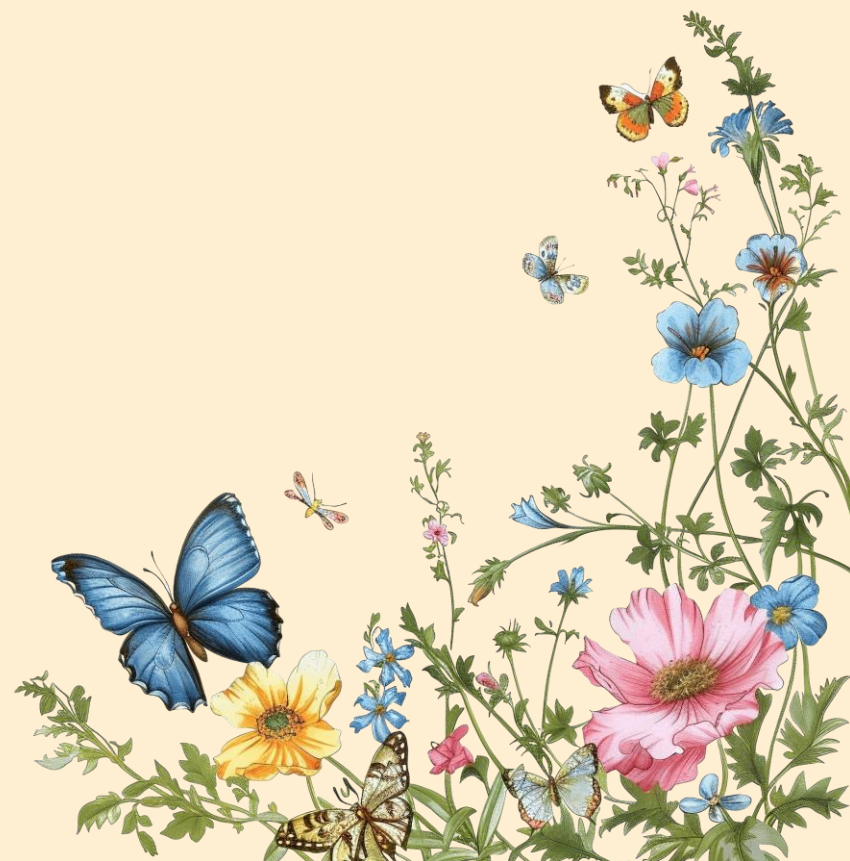


# Skincare proposal

2024 F/W



# Skincare proposal from SUNJIN

## Ceramide Shield Skin Barrier



## Deep Skin Delivery



## Deep skin delivery by Aqua Oil



# Aqua Phytoplex Cream in Toner & Mist

## SJF-2201 Aqua Phytoplex Cream in Toner & Mist

**Oxidation resistant,  
No need to add  
fragrance**

By AQUA CCTG,  
AQUA Phytosqualane



	Ingredients	INCI Name	%
A	D.I. Water	Water	76.4
	Glycerin	Glycerin	1.2
	Allantoin	Allantoin	0.1
	GreenDiol	2,3-Butanediol	6.0
B	AQUA MEADOWFOAM	Glycerin, Limnanthes alba (Meadowfoam) Seed Oil, Polyglyceryl-10 Stearate	0.02
	AQUA PHYTOPLEX	Glycerin, Limnanthes alba (Meadowfoam) Seed Oil, Canola Oil, Helianthus Annuus (Sunflower) Seed Oil, Argania Spinosa Kernel Oil, Polyglyceryl-10 Stearate	0.02
	AQUA ARGAN	Glycerin, Argania Spinosa Kernel Oil, Polyglyceryl-10 Stearate	0.02
	AQUA CCTG	Glycerin, Caprylic/Capric Triglyceride, Water, Polyglyceryl-10 Stearate	7.5
	AQUA PHYTOSQUALANE	Glycerin, Squalane, Polyglyceryl-10 Stearate	7.5
C	KMO-6	1,2-Hexanediol	1.2
	Sensiva® SC 50	Ethylhexylglycerin	0.1
	Citric Acid Anhydrous	Citric Acid	0.004

**Net Oil 4.5 % = (0.02+0.02+7.5+7.5)\*30%**

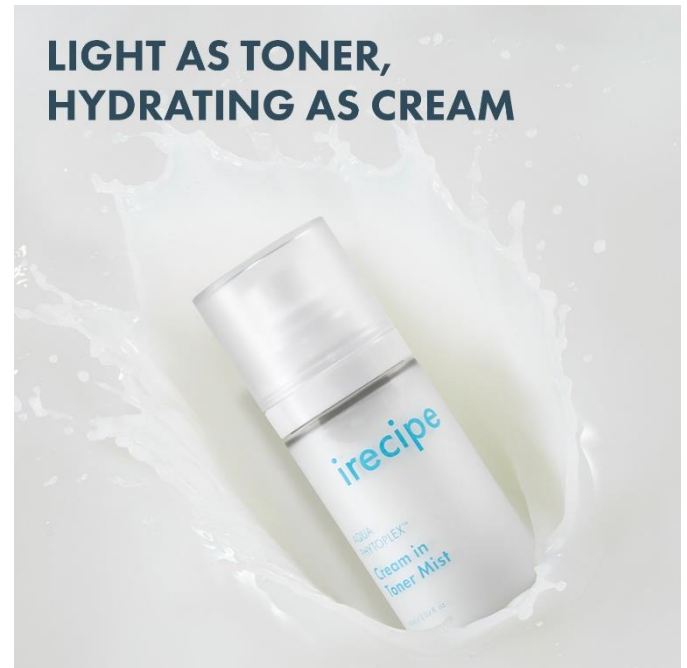
# irecipe Cream in Toner & Mist

PEG Free, **Fragrance Free**



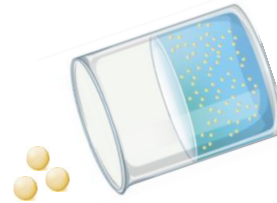
# irecipe Cream in Mist

PEG Free, **Fragrance Free**



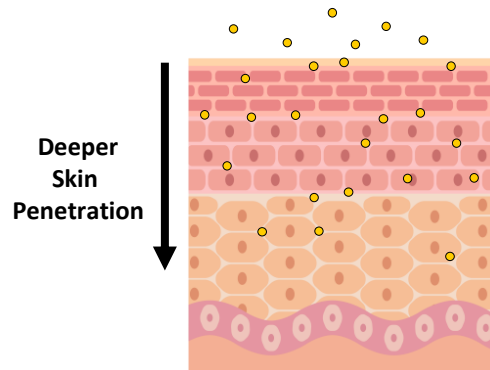
# Deeper & Faster Skin Delivery

**Smaller** droplet size



Size of Emulsion

by AQUA PHYTOPLEX: **0.118um**

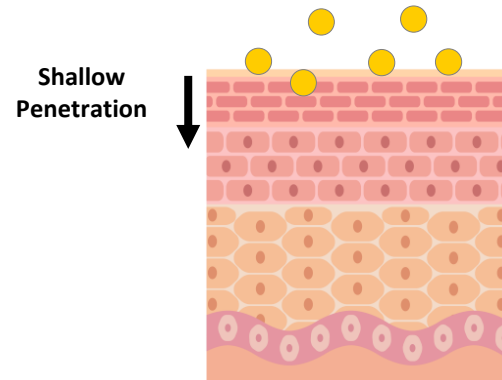


**Larger** droplet size



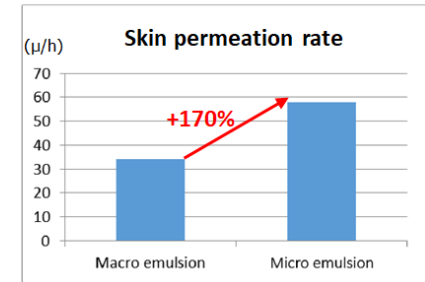
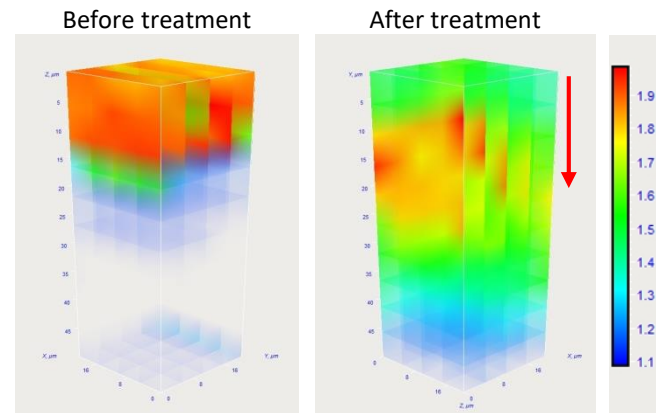
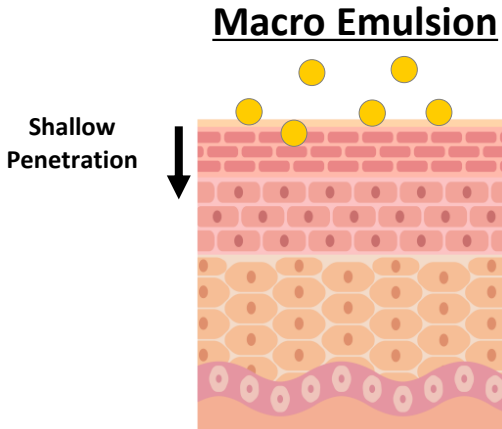
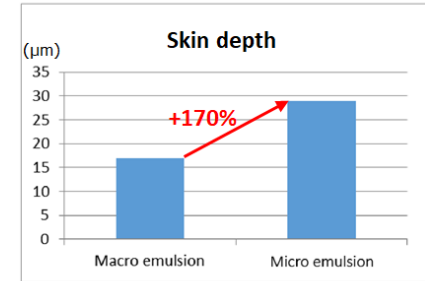
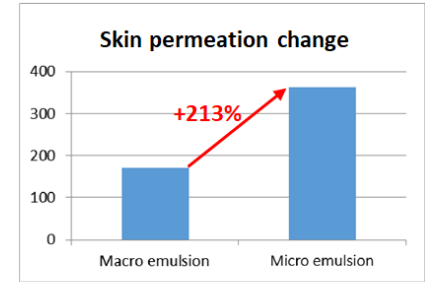
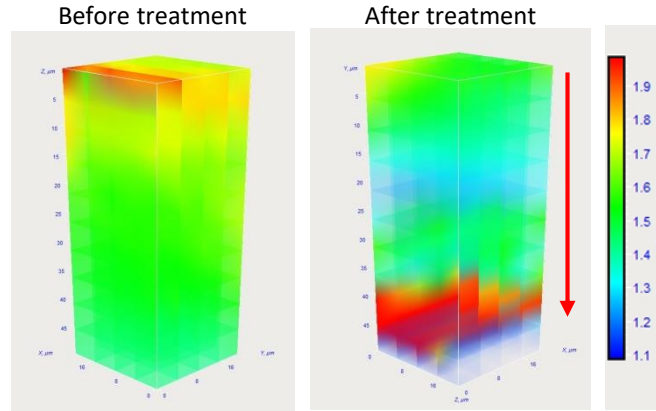
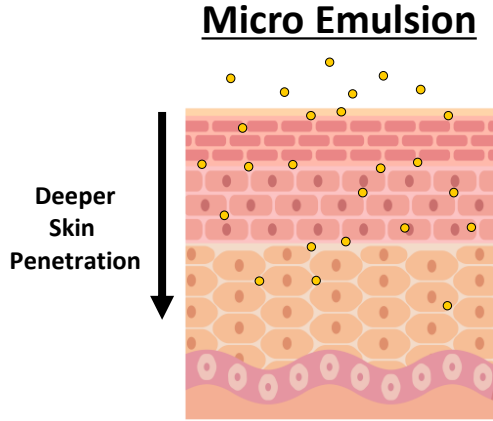
Emulsion droplet size:

**4.253um**





# Deep Skin Delivery data

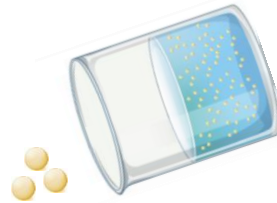


P&K Skin Research Center test report (2022)  
Byn3D Raman Spectroscopy



# Better Skin Coverage

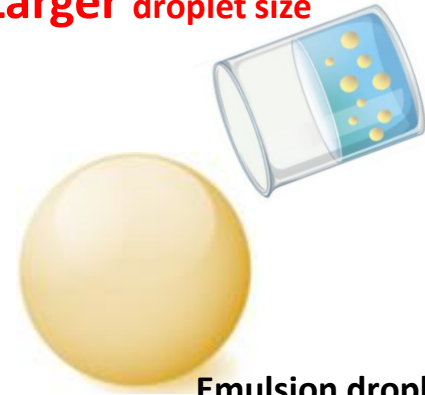
**Smaller droplet size**



Size of Emulsion

by AQUA PHYTOPLEX: **0.118um**

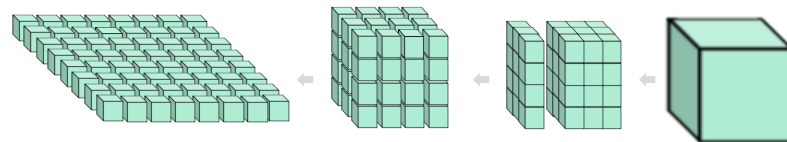
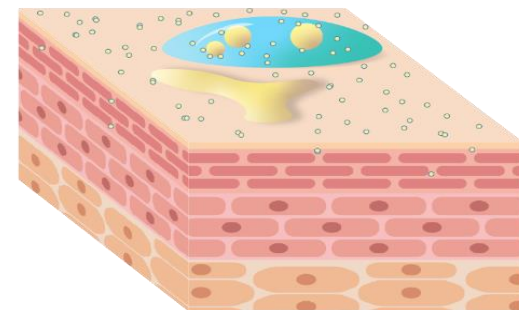
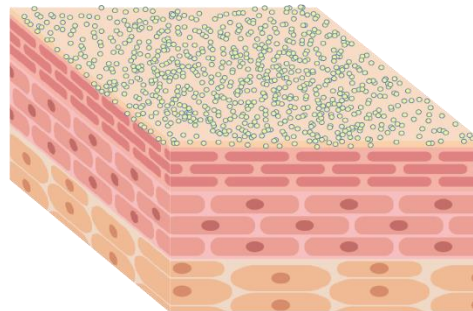
**Larger droplet size**



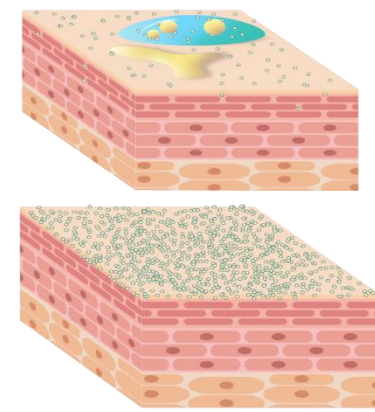
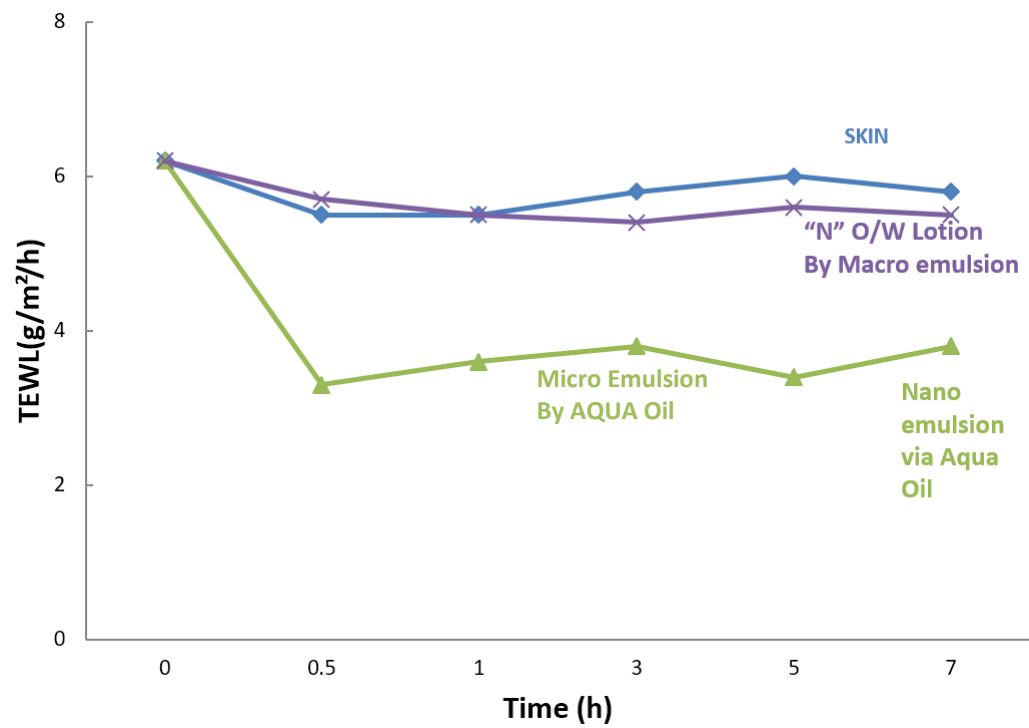
Emulsion droplet size:

**4.253um**

The small droplet size provides a **large surface area** and uniform distribution on the skin, **good occlusiveness**, film formation, aesthetic qualities and skin feel



# Better Skin Coverage (Moisturization)



# Aqua Phytoplex Soothing Gel

## SJF-2200\_ Aqua phytoplex Soothing Gel

### Key Marketing Claim

Creamy gel with  
More hydration

Stability test at 50°C:  
4 weeks+



	Ingredients	INCI Name	%
A	D.I.Water	Water	72.98
	Cabopol-940	Carbomer, Water	0.2
B	Unijel CGH	Water, Glycerin, Glyceryl Acrylate/Acrylic Acid Copolymer, 1,2-Hexandiol	9.0
	Keltrol F V	Xantan gum (Vegan)	0.1
	Glycerin	Glycerin	5.0
	HAX	Water, Sodium Hyaluronate Crosspolymer, 2,3-BG, Ethylhexylglycerin	5.0
	Hyalpol Matrix	Water, Propanediol, Sodium Hyaluronate Crosspolymer, Hydrolyzed Glycosaminoglycans, Glycerin, Sodium Hyaluronate, Benzyl Glycol, Hydrolyzed Hyaluronic Acid, Ethylhexylglycerin, Hyaluronic Acid	1.0
	Allantoin	Allantoin	0.1
	Aloe Vera Extract	Alloe Extract	1.0
C	AQUA PHYTOSQUALANE	Glycerin, Squalane, Polyglyceryl-10 Stearate	2.0
	AQUA PHYTOPLEX	Glycerin, Limnanthes alba (Meadowfoam) Seed Oil, Canola Oil, Helianthus Annuus (Sunflower) Seed Oil, Argania Spinosa Kernel Oil, Polyglyceryl-10 Stearate	0.02
	Fragrance	Fragrance	0.3
D	D.I.Water	Water	2.0
	Tromethamine	Tromethamine	0.2
E	1,2-Hexanediol	Hexanediol	1.0
	Sensiva sc 50	Ethylhexylglycerin	0.1

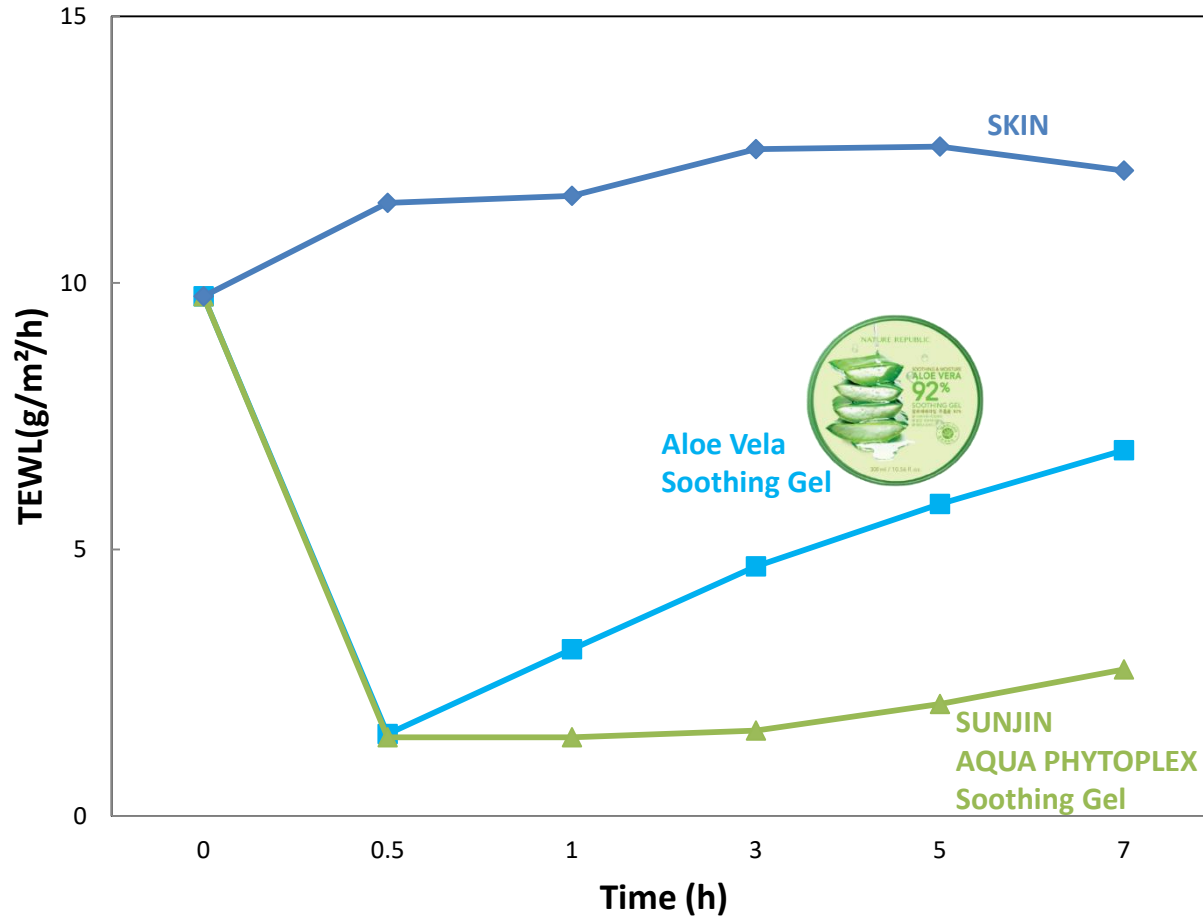
# Soothing Gel

SJF-2200\_AQUA PHYTOPLEX Soothing Gel



# Moisturizing Effect

In vivo measurement of **TEWL**  
(Transepidermal water loss)



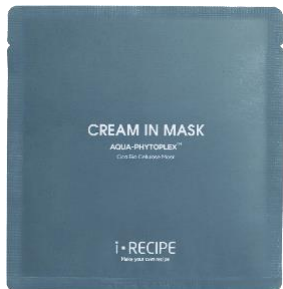
Tested Condition

- 3 different panels
- Apply 1g of emulsion on the arm

# Aqua Phytoplex Cream in Mask

## SJF-2202\_ Aqua Phytoplex Cream in Mask

	Ingredients	INCI Name	%
A	Centella Asiatica Leaf Extract	Water, Centella Asiatica Leaf Extract, 1,2-Hexandiol	83.82
	Glycerin	Glycerin	0.8
	DL-Panthenol	Panthenol	0.1
	GENENCARE® OSMS BA	Betaine	0.5
	Allantoin	Allantoin	0.1
	Dipropylene Glycol	Dipropylene Glycol	5.0
	Xanthan Gum	Xanthan Gum	0.1
B	AQUA PHYTOPLEX	Glycerin, Limnanthes alba (Meadowfoam) Seed Oil, Canola Oil, Helianthus Annuus (Sunflower) Seed Oil, Argania Spinosa Kernel Oil, Polyglyceryl-10 Stearate	0.1
	AQUA CCTG	Glycerin, Caprylic/Capric Triglyceride, Water, Polyglyceryl-10 Stearate	1.5
	AQUA ARGAN	Glycerin, Argania Spinosa Kernel Oil, Polyglyceryl-10 Stearate	1.5
	AQUA PHYTOSQUALANE	Glycerin, Squalane, Polyglyceryl-10 Stearate	1.5
	AQUA MEADOWFOAM	Glycerin, Limnanthes alba (Meadowfoam) Seed Oil, Polyglyceryl-10 Stearate	1.5
	SJC-ClearSol D	Polyglyceryl-10 Laurate, Polyglyceryl-4 Laurate, Dipropylene Glycol	0.1
	BioGenic YUJA Essential Oil	Citrus Junos Peel Oil	0.006
	Lavender oil	Lavandula Angustifolia (Lavender) Oil	0.002
C	KMO-6	1,2-Hexanediol	1.2
	Sensiva® SC 50	Ethylhexylglycerin	0.1





# Ceramide Shield Skin Barrier by Ceraplex



# Aqua Phytoplex Cera Cream

## SJF-2301\_ Aqua Phytoplex Cera Cream



**Key Marketing Claim**  
**Ceramide 2,500ppm**  
**with excellent**  
**formula stability**

Stability test at 50°C:  
4 weeks+

Viscosity (LV3, 100rpm):  
7,500cps



	Ingredients	INCI Name	2500 ppm	5000 ppm
A	D.I.Water	Water	58.7	43.5
	Cabopol-940	Carbomer	0.2	0.1
	KELTROLÒ F V	Xanthan Gum	0.1	0.0
	1,3-BG	1,3-Butylene Glycol	5.0	5.0
	Glycerin	Glycerin	2.0	2.0
B	Phytowax Olive 10L 40	Hydrogenated Olive Oil Decyl Esters	4.0	4.0
	Candelilla wax FC-31	Candelilla Wax Hydrocarbons	-	3.0
	Meadowfoam Seed Oil	Limnanthes Alba (Meadowfoam) Seed Oil	2.0	3.0
	Silkflo 364NF	Hydrogenated Polydecene	2.0	3.0
	TEGO® Care PBS 6 MB	Polyglyceryl-6 Stearate; Polyglyceryl-6 Behenate	4.0	4.0
	SF1000NFX010	Dimethicone	1.0	1.0
	NAFOL 1822B	Behenyl Alcohol	1.0	1.0
	Durosoft PG10-O	Polyglyceryl-10 Oleate	1.0	-
	Phyto Squalane	Squalane	3.0	5.0
	Bergacare SB	Butyrospermum Parkii (Shea) Butter	1.0	-
COSMOL 168 AR	Dipentaerythryl Hexahydroxystearate/Hexastearate/Hexar osinate	3.0	-	
C	D.I.Water	Water	5.0	6.0
	TMA	Tromethamine	0.1	0.1
D	1,2-Hexanediol	1,2-Hexanediol	1.0	1.0
	Sensiva sc 50	Ethylhexylglycerin	0.1	0.1
	AQUA PHYTOPELX	Glycerin, Limnanthes alba (Meadowfoam) Seed Oil, Canola Oil, Helianthus Annuus (Sunflower) Seed Oil, Argania Spinosa Kernel Oil, Polyglyceryl-10 Stearate	0.2	0.2
E	D.I.Water	Water	3.0	5.0
	Amphisol K	Potassium Cetyl Phosphate	0.1	0.3
	CERAPLEX MIX AQUA	Caprylic/Capric Triglyceride, Polyglyceryl-10 Stearate, Distearidimonium Hectorite, Hydroxypropyl Bispalmitamide MEA, Phytosterols, Stearic Acid, Ceramide NP	2.5	5.0

# Ceramide Vita Berry Balm



## SJF-2205\_Ceramide Vita Berry Balm

### Key Marketing Claim Ceramide 5,000ppm

with excellent formula  
stability

Stability test at 50°C:  
4 weeks+



	Ingredients	INCI Name	2500 ppm	5000 ppm
A	Cetiol CC	Dicaprylyl Cabonate	5.0	7.0
	DUB PTO	Pentaerythrityl Tetraethylhexanoate	4.0	4.0
	Ozokerite Wax SP1020P	Ozokerite Wax	2.3	3.0
	Phytowax Olive 12L 44	Hydrogenated Olive Oil Stearyl Esters	1.8	2.0
	GMS-105	Glyceryl Stearate	-	0.9
	Cetiol Ultimate	Undecane, Tridecane	9.0	4.5
	EcoDropGel	Polyglyceryl-4 Isostearate, Coco-Caprylate/Caprata, Disteardimonium Hectorite	4.0	4.0
	MLB	Disteardimonium hectorite, Polyglyceryl 4 isostearate, Coco-Caprylate/Caprata, Polyglyceryl 3 polyricinoleate, Sorbitan isostearate	0.5	3.0
	CERAPLEX MIX	Disteardimonium Hectorite, Polyglyceryl-4 Isostearate, Caprylic/Capric Triglyceride, Hydroxypropyl Bispalmitamide MEA, Cholesterol, Stearic Acid, Ceramide NP	2.5	5.0
	DL-A-Tocopherol Care	Tocopherol	0.1	0.1
B	D.I. Water	Water	54.5	50.0
	EDTA-2Na	Disodium EDTA	0.05	0.05
	NaCl	Sodium chloride	0.5	0.5
	DL-Panthenol	Panthenol	-	0.1
	Niacinamide	Niacinamide	-	2.0
	Keltrol F V	Xanthan Gum	0.05	0.05
	Glycerin	Glycerin	9.0	10.0
	1,3 Propanediol	Propanediol	3.0	4.0
	1,2-Hexanediol	Hexanediol	1.5	1.5
Sensiva SC50	Ethylhexylglycerin	0.1	0.1	
C	Rosemary Oil CSN064656	Rosmarinus Officinalis (Rosemary) Leaf Oil	-	0.0
	Grapefruit Oil CSN066539	Citrus Paradisi (Grapefruit) Peel Oil	-	0.2
	Varrier®	Butylene Glycol, Berberis Vulgaris Root Extract, Fragaria Chiloensis (Strawberry) Fruit Extract, Water, Lycium Chinense Fruit Extract, Morus Nigra Fruit Extract	2.0	-
D	Campo® Siddha Vepuvillai Karushalai Yenai	ECLIPTA PROSTRATA EXTRACT, MELIA AZADIRACHTA LEAF EXTRACT MORINGA PTERYGOSPERMA OIL	0.1	0.1

# Ceramide Yuja Healing Cleansing Balm

## SJF-2203\_Ceramide Yuja Healing Cleansing Balm

### Key Marketing Claim

**Ceramide 100ppm  
Melting Formula**

**Clean beauty  
(PEG free)**

Removes makeup without  
leaving a residue

Stability test at 50°C:  
4 weeks+



	Ingredients	INCI Name	%
A	SUNSOFT Q-102H-C(MB)	Polyglyceryl-6 Dicaprate	6.0
	SUNSOFT Q-192Y-C	Polyglyceryl-10 Diisostearate	8.0
	Arlacel 83	Sorbitan Sesquioleate	0.9
	Bergacare EM-CO MB	Cetyl Ethylhexanoate	56.2
	MCT Oil	Caprylic/Capric Triglyceride	20.0
	DL_Alpha tocopherol	Tocopherol	0.1
	CERAPLEX MIX AQUA	Caprylic/Capric Triglyceride, Polyglyceryl-10 Stearate, Disteardimonium Hectorite, Hydroxypropyl Bispalmitamide MEA, Phytosterols, Stearic Acid, Ceramide NP	0.1
	Performa SW 88	Synthetic Wax	3.0
	Performa SW 84	Synthetic Wax	3.0
B	1,3-BG	Butylene Glycol	1.0
	D.I.Water	Water	0.9
	Yuzow	Citrus Junos Fruit Extract, Pentylene Glycol, Caprylyl Glycol	0.1
	1,2-Hexanediol	1,2-Hexanediol	0.1
	Sensiva SC50	Ethylhexylglycerin	0.05
C	Fragrance	Fragrance	0.5

# Cleansing Balm with Ceramide 100 ppm



## KEY FEATURES

### CLEAN BEAUTY & VEGAN

:Formulated with only gentle, skin-loving ingredients

### ALL-IN-ONE CLEANSER

:Cleanses & removes makeup - no double cleanse

### EFFECTIVE SEBUM CONTROL

:Perfectly controls sebum and clears impurities

### HYPOALLERGENIC AND GENTLE FORMULA

:No irritation even for sensitive eyes

# Cleansing Balm with Ceramide 100 ppm

## How to Use



1

Use the included spatula to scoop an appropriate amount of balm.



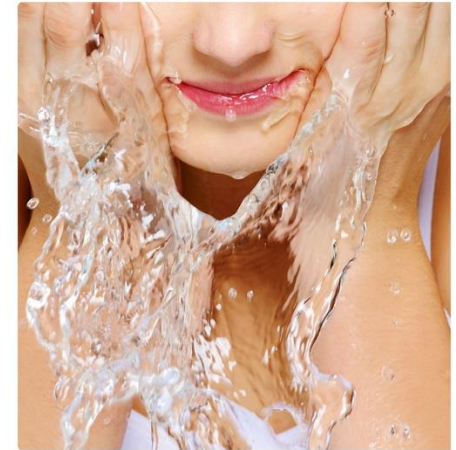
2

Apply the balm to your face, gently massaging in circular motions until it melts into an oil that works to dissolve makeup.



3

Add a small amount of water and gently massage your face again, allowing the oil to emulsify into a milky texture for a deep, thorough cleanse.



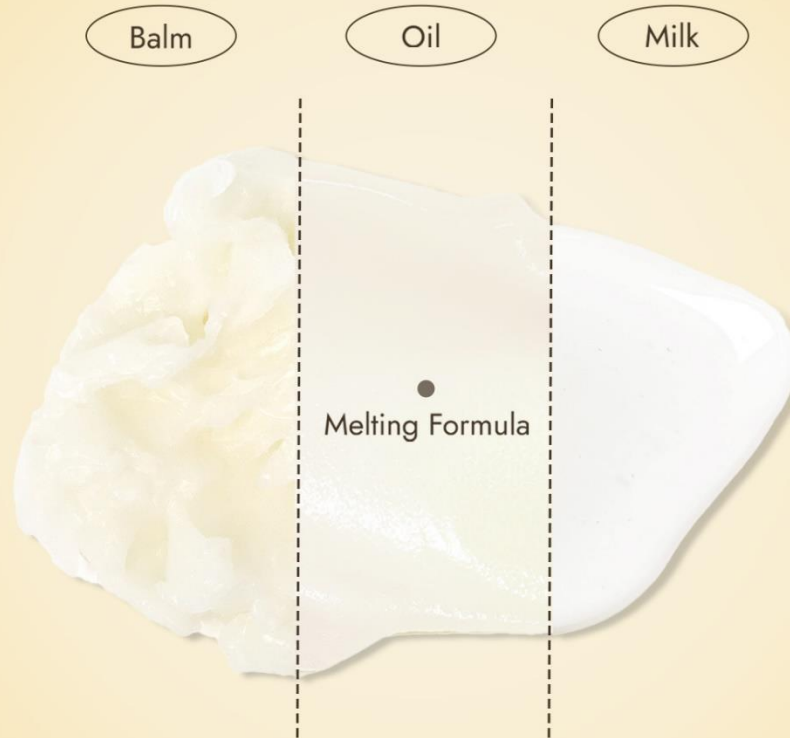
4

Rinse off the emulsified residue thoroughly with lukewarm water.



# Melting Formula

## MELTING FORMULA TEXTURE

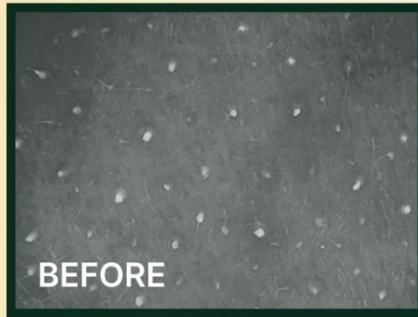


The balm melts into an **oil** on skin, **dissolving makeup and impurities**, then transforms into a **milky texture** to **help clear whiteheads and balckheads**.

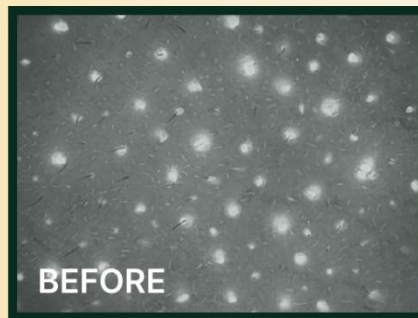
# Reduces Whiteheads & Blackheads

**CLINICALLY PROVEN** to visibly  
reduce whiteheads & blackheads

Reduces whiteheads by **57.5%**



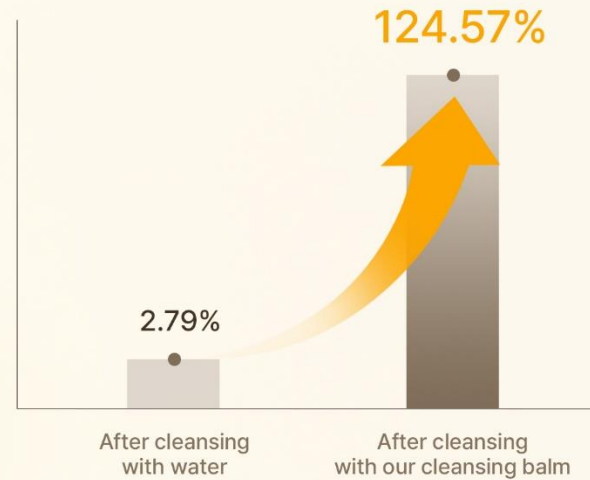
Reduces blackheads by **59.7%**



Human application test on the cleansing efficacy of the Ceramide Yuzu Healing Cleansing Balm for whiteheads and blackheads, conducted by the Korea Dermatology Research Institute on 22 adults (male and female) aged 20-39, May 20, 2024.

# Moisturizing, Even after wash

## Infused with 100ppm of Ceramide



**Keep this moisture even after cleansing!  
Skip double cleansing.**

# Ceramide Shield Skin Barrier with Silicone free elastic gel



# Ceramide Shield Skin Barrier Lotion

## SJF-2302-1\_Ceramide Shield Skin Barrier Lotion

Ceramide 100ppm

SFGEL provides premium skin feel

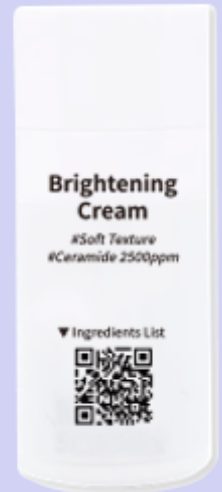
Must use 2% of SFGEL to have elastic cushioning effect

Stability test at 50°C:  
4 weeks+



	Ingredients	INCI Name	%
A	D.I. Water	Water	64.55
	Cabopol-940	Carbomer	0.05
	Keltrol F V	Xantan gum (Vegan)	0.05
	AQUA Phytoplex	Glycerin, Canola Oil, Helianthus Annuus (Sunflower) Seed Oil, Argania Spinosa Kernel Oil, Limnanthes Alba (Meadowfoam) Seed Oil, Polyglyceryl-10 Stearate	0.2
	1,3-BG	1,3-Butylene glycol	5.0
	Glycerin	Glycerin	2.0
B	Meadowfoam Seed Oil	Limnanthes Alba (Meadowfoam) Seed Oil	2.0
	Silkflo 364NF	Hydrogenated Polydecene	2.0
	SF1000NFX010	DIMETHICONE	1.0
	Tecocare 450	Polyglyceryl-3 Methylglucose Distearate	2.0
	Montanov202	Arachidyl Alcohol (and) Behenyl Alcohol (and) Arachidyl Glucoside	2.0
	Phyto Squalane	Squalane	3.0
	Cetiol CC	Dicaprylyl Carbonate	6.0
	Tegosoft CT(MCT)	Caprylic/Capric Triglycerides	3.0
	SFGEL-S	Caprylic/Capric Triglyceride, Dicaprylyl Carbonate, Dextrin Palmitate, Diisostearyl Malate, Lactobacillus Ferment	2.0
C	CERAPLEX MIX AQUA	Disteardimonium Hectorite, Polyglyceryl-10 stearate, Caprylic/capric triglyceride, Hydroxypropyl Bispalmitamide MEA, Phytosterol, Stearic Acid, Ceramide NP	0.1
D	TMA	Tromethamine	0.05
	D.I. Water	Water	3.0
E	Fragrance		0.2
F	1,2-Hexanediol	1,2-Hexanediol	1.0
	Sensiva SC50	Ethylhexylglycerin	0.1

# Ceramide Shield Skin Barrier Tone-up





# Brightening Cream

## SJF-2203-1\_Brightening Cream

### Moistful Tone-up

Soft texture  
With ceramide 2500ppm

Stability test at 50°C:  
4 weeks+



	Ingredients	INCI Name	Moisturizing
A	D.I. Water	Water	69.8
	Niacinamide	Niacinamide	2.0
	Propandiol	Propandiol	5.0
B	Aristoflex AVC	Ammonium Acryloyldimethyltaurate / VP Copolymer	0.15
C	Simulgel EPG	Sodium Acrylate/Sodium Acryloyldimethyl Taurate Copolymer, Polyisobutene, Caprylyl/Capryl Glucoside	3.0
D	Cetiol C5C	Coco-caprylate/capratae	5.0
E	AQUA-TITAN(EWG)	Titanium Dioxide, Water, Polyglyceryl-10 diisostearate, Triethoxycaprylylsilane, 1,2-hexanediol	3.0
	1,3-B.G	Butylene Glycol	6.0
F	CERAPLEX MIX AQUA	Caprylic/Capric Triglyceride, Polyglyceryl-10 Stearate, Distearidimonium Hectorite, Hydroxypropyl Bispalmitamide MEA, Phytosterols, Stearic Acid, Ceramide NP	2.5
	AQUA PHYTOPLEX	Glycerin, Limnanthes Alba (Meadowfoam) Seed Oil, Canola Oil, Helianthus Annuus (Sunflower) Seed Oil, Argania Spinosa Kernel Oil, Polyglyceryl-10 Stearate	2.5
G	1,2-Hexanediol	1,2-Hexanediol	1.0
	Sensiva SC 50	Ethylhexylglycerin	0.05