

Other Surfactants

CETRIMONIUM CHLORIDE for hair care products

Conditioning agent for hair care

Prevent the buildup of static electricity

Inhibiting the growth of microorganism

Grade	Active (%)	Solvent	Free amine (%)	pH	Color (APHA)
SUNQAT-CM27	27%	Water	1.0 max	7.0 ± 1.0	40 max
SUNQAT-CM29	29%	Water	1.0 max	5.0 ± 1.0	40 max
SUNQAT-CM50	50%	Mixed Alcohol	1.0 max	7.0 ± 1.0	30 max

Best recommend for

- ▶ Hair condition
- ▶ Hair pack
- ▶ Hair dye



INCI name
: Cetrimonium chloride

CAS No.
:112-02-7

Custom Tariff No.
:3402.12-0000

Guideline formula for SUNQAT-CM

Hair pack

Ingredients	%
SUNQAT-CM29	7.0
Glycerin	3.0
Methyl Paraben	0.1
Hydroxy ethyl cellulose	0.2
Cetyl alcohol	7.0
Isopropyl Myristate	3.0
Vegetable Oil	2.0
Propyl Paraben	0.1
Vitamin E Acetate	0.1
Polyquaternium-7	1.0
Silicone Emulsion	3.0
Fragrance	0.3
D.I. Water	up to 100



Hair rinse

Ingredients	%
SUNQAT-CM29	5.0
Polyquaternium-7	1.0
Hydroxy ethyl cellulose	0.2
Cetyl alcohol	5.0
Glyceryl Stearate/PEG100 Stearate	1.5
LP	2.0
Cyclomethicone	3.0
Silicone Emulsion	1.0
Preservative	0.05
Extracts	0.1
Fragrance	0.15
D.I. Water	up to 100



IMIDAZOLINE Ester QUANTERNARY for Fabric Softener

Grade	Solid (%)	Solvent	Liquid point (°C)	Paste point (°C)	Alkyl Group	Color (Gardener)
SUNQAT-OMQ90	90±1	EtOH	5~10	0 ~5	Oleic	3.0 max

Best recommend for

- ▶ Fabric softener
- ▶ Textile treatment



INCI name
:Methyl-1-oleylamido ethyl-2-oleyl
imidazolinium methyl sulfate

CAS No.
:86088-85-9

Custom Tariff No.
:3402.12-0000

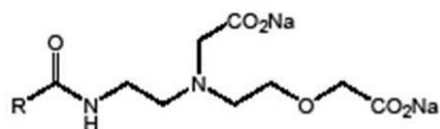
DISODIUM COCOAMPHODIACETATE for baby & sensitive skin

Very mild foaming agent

Very low skin irritation (Not defatting to the skin)

Good compatibility with other surfactants

Grade	Dry residue (%)	Solvent	Cl as NaCl (%)	Color (Gardener)
SUNBET-C2M	49.0 min	Water	13± 2	4.0 max



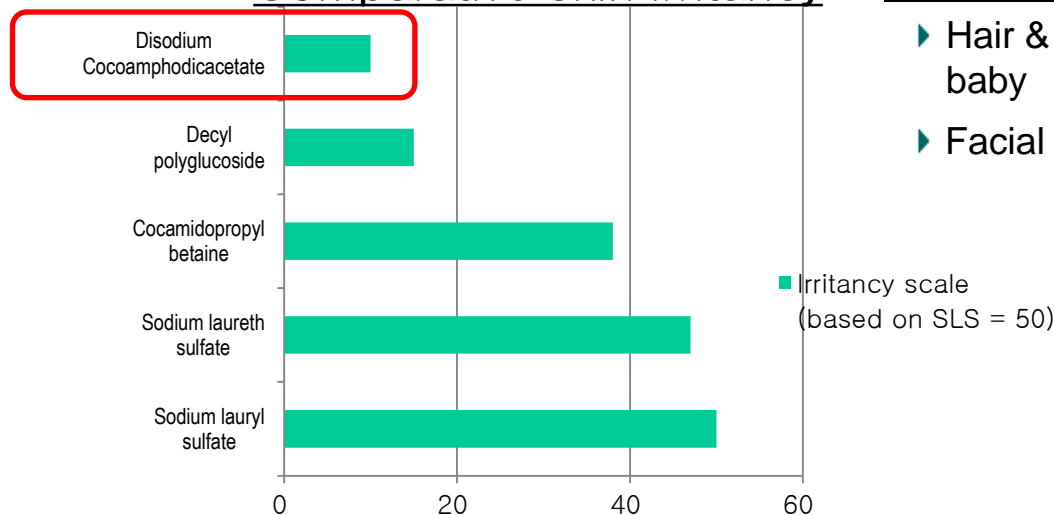
R: Coconut Oil Radical

INCI name
: Disodium cocoamphodiacetate

CAS No.
:68650-39-5

Custom Tariff No.
:3402.11-0000

Comparative skin irritancy



Best recommend for

- ▶ Hair & body wash for baby
- ▶ Facial cleanser