

Measurement of Residual monomer Content

[SJ-MM-007]

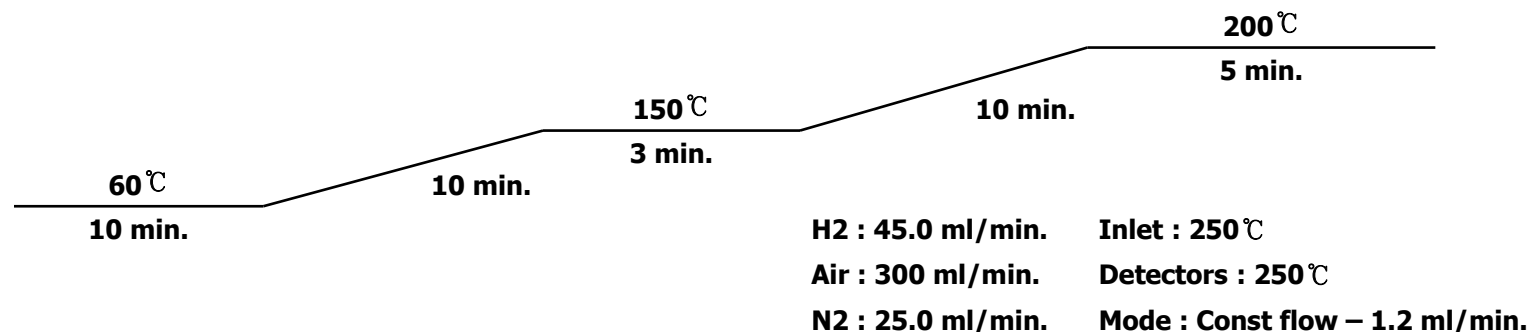
2012-12-27

Supersedes prior issues

Quality Assurance

Test procedure

1. Take PMMA powder as a sample by 10g.
2. Put the sample into 90g EtOH solution.
3. Stir well for 30 minutes at a room temperature.
4. Take 1um of EtOH solution and load into GC.
5. GC condition is



Method detection limit(MDL)
-Monomer : 10 ppm (10% dilution)

Used Column:
AGILENT TECHNOLOGIES
CATALOG 19091J-413 HP-5
50m * 0.320mm 0.25 HICRON
-60 To 325/350C SN US 1653662H

6. Compare GC peaks with a standard monomer peak.
7. Calculate monomer content.

SUNJIN CHEMICAL CO.,LTD.